



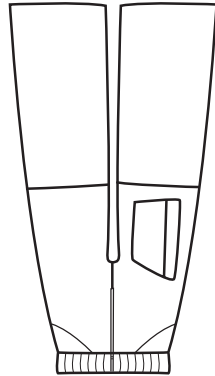
The Airfield, Headcorn, Kent, TN27 9HX, UK  
 Tel 01622 890967 - Fax 01622 891236  
 Email symbiosis.suits@btinternet.com  
 www.symbiosis.suits.btinternet.co.uk

## ORDER FORM - BOOTIE BOTTOMS

Name \_\_\_\_\_  
 Sex \_\_\_\_\_  
 Address \_\_\_\_\_  
 \_\_\_\_\_  
 Country \_\_\_\_\_  
 Tel/Fax \_\_\_\_\_  
 Email \_\_\_\_\_

**Office Use Only**  
 Date Received \_\_\_\_\_  
 Amount Paid \_\_\_\_\_  
 Notes \_\_\_\_\_

Symbi Bootie Bottoms may be ordered with either a generously cut, baggy fit of with a slimmer cut. They are built from a durable 65/35 poly-cotton fabric. The Mega booties are Cordura with leather soles.

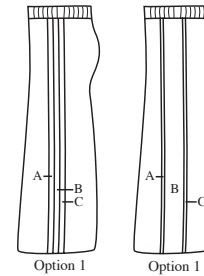
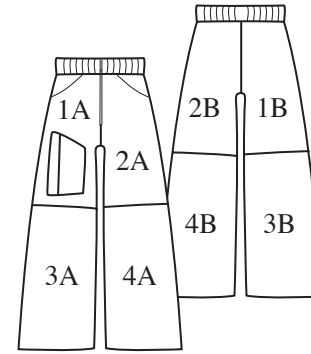


Stripes may be added at a small additional cost.

Bootie Bottoms feature 1 x patch pocket, 2 zip pockets and a zippered fly.

## COLOURS

FABRICS	Bootie pants 3A & 4A	Poly-Cotton
COLOURS		
Black		
Dark Grey		
Light Grey		
White		
Navy Blue		
Royal Blue		
Light Blue		
Turquoise		
Jade Green		
Mid Green		
Neon Yellow		
Golden Yellow		
Orange		
Red		
Bergundy		
Deep Pink		
Light Pink		
Purple		



**Your Colours**

1A \_\_\_\_\_  
 1B \_\_\_\_\_  
 2A \_\_\_\_\_  
 2B \_\_\_\_\_  
 3A- Cordura \_\_\_\_\_  
 3B \_\_\_\_\_  
 4A- Cordura \_\_\_\_\_  
 4B \_\_\_\_\_  
 5A \_\_\_\_\_  
 5B \_\_\_\_\_  
 6A \_\_\_\_\_  
 6B \_\_\_\_\_  
 7A \_\_\_\_\_  
 7B \_\_\_\_\_  
 8A \_\_\_\_\_  
 8B \_\_\_\_\_

**Stripe Options**

1  2

A.....  
 B.....  
 C.....

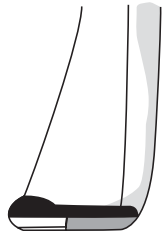
## MEASUREMENTS

**Please take your measurements carefully.** We are unable to make your suit fit without your correct measurements. Study the diagram to assist you. Get someone to help you and double check each measurement. Measure yourself over a T-shirt and thin trousers.

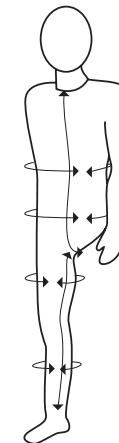
**Do not add anything to your measurements.**

**If we receive incorrect measurements, we will have to charge for modifications.**

BOOTIE BOTTOMS	Baggy Fit	£150
	Slimmer Fit	
Colour Stripes A - B		£20
Mega Booties		inc
Vented Mega booties		£15
Rush Order		£45
Post & Packing	UK	£9
	Europe	£14
	Outside Europe	£18



HEIGHT \_\_\_\_\_  
 WEIGHT \_\_\_\_\_  
 WAIST \_\_\_\_\_  
 Narrowest Part  
 HIP \_\_\_\_\_  
 Widest part around the buttocks  
 THIGH \_\_\_\_\_  
 CALF \_\_\_\_\_  
 Take all these measurements around the widest part.



**BODY** \_\_\_\_\_  
 Be VERY careful with this measurement! Stand up straight, measure from under the crutch where the seams of your trousers meet, up the front to the collar of a close fitting T-shirt.

**INSEAM** \_\_\_\_\_  
 From the crutch to the ankle bone.

**SHOE SIZE** \_\_\_\_\_

Payment for the full amount must accompany each order **TOTAL ENCLOSED**