



The Airfield, Headcorn, Kent, TN27 9HX, UK  
 Tel 01622 890967 - Fax 01622 891236  
 Email symbiosis.suits@btinternet.com  
 www.symbiosissuits.co.uk

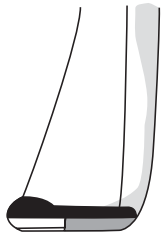
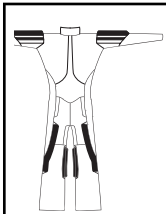
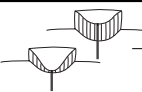
## ORDER FORM - Symbi EXCEL Competition Suit

Name \_\_\_\_\_  
 Sex \_\_\_\_\_  
 Address \_\_\_\_\_  
 \_\_\_\_\_  
 Country \_\_\_\_\_  
 Tel/Fax \_\_\_\_\_  
 Email \_\_\_\_\_

All major Credit and Debit cards except AmEx.  
 No.....  
 Expiry date.....Security No.....  
 Issue No if appropriate.....  
 or Cheques made payable to Symbiosis Suits.

The ultimate fast fall, hard wearing suit for the serious competitor.

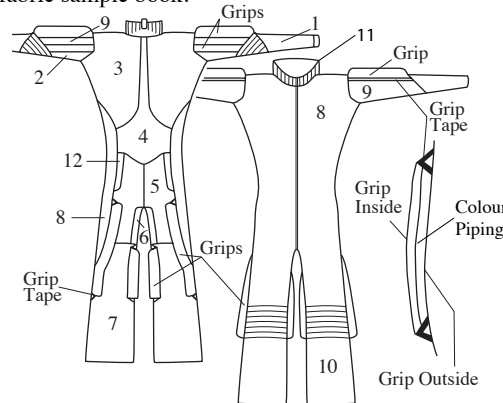
- Comes complete with all competition options -
- Extra fat, extra long grips including long inside knee grips and double arm grips
  - Cordura 'Mega' booties with leather soles and press studs.
  - Padded knees, elbows, inside pocket and Coolmax mesh lining are also standard •

<b>EXCEL Competition Suit</b>		<b>£325</b>
  	Cordura Mega Booties	✓
	Fat Competition Grips	✓
	Padded Knees	✓
	Padded Elbows	✓
	Collar - High	
	Collar - Low	
Jack Knife Pocket		<b>£15</b>
Single Colour piping along length of grips		<b>£12</b>
Rush Order		<b>£45</b>
<b>Symbi T'Shirt</b>	WHITE - blue & black logo	Sm Med Lge XL
	BLACK - blue & silver logo	
		<b>£16</b>
UK		<b>£11</b>
<b>Post &amp; Packing</b>	Europe	<b>£19</b>
	Outside Europe	<b>£28</b>
Payment for the full amount must accompany each order		<b>TOTAL ENCLOSED</b>

## COLOURS

**CHOOSE YOUR COLOURS WITH A CROSS IN THE BOXES ON THE RIGHT.**

If your design is not symmetrical write your colour choice on the drawings. Some colours are not a perfect match in the different fabrics. If in doubt, see fabric sample book.



Padded knees colour \_\_\_\_\_  
 Padded elbows colour \_\_\_\_\_  
 Piping on grips colour \_\_\_\_\_

PANELS	1	2	3	4	5	6	7	8	9	10	11	12	Grips Outside	Grips Inside	Grip Tape
Black															
Dark Grey															
Light Grey															
Silver Grey															
White															
Navy Blue															
Royal Blue															
Light Blue															
Blue Turquoise															
Petrol Green															
Jade Green															
Emerald Green															
Mid Green															
Dark Green															
Olive Green															
Lime Green															
Neon Yellow															
Golden Yellow															
Orange															
Red															
Bergundy															
Raspberry															
Neon Pink															
Rose Pink															
Light Pink															
Purple															
Dark Purple															
Lilac															

## MEASUREMENTS

**Please take your measurements carefully.** We are unable to make your suit fit without your correct measurements. Study the diagram to assist you. Get someone to help you and double check each measurement. Measure yourself over a T-shirt and thin trousers.

**Do not add anything to your measurements.**

**If we receive incorrect measurements, we will have to charge for modifications.**

**Take all these measurements (except the waist measurement) around the widest part.**

HEIGHT \_\_\_\_\_

WEIGHT \_\_\_\_\_

SHOULDERS \_\_\_\_\_

CHEST \_\_\_\_\_

Across the back from one shoulder seam to the other. Straight tape

Widest part - Around nipple

Girls - CUP SIZE \_\_\_\_\_

ARM \_\_\_\_\_

WAIST \_\_\_\_\_

From the shoulder seam of a shirt to the bone of the wrist.

Narrowest Part

HIP \_\_\_\_\_

FOREARM \_\_\_\_\_

Widest part around the buttocks

THIGH \_\_\_\_\_

BICEP \_\_\_\_\_

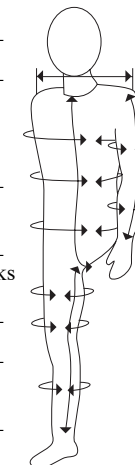
LOWER THIGH \_\_\_\_\_

Widest part of muscle with the bicep relaxed.

125mm above knee

CALF \_\_\_\_\_

Widest part of muscle



BODY \_\_\_\_\_

Be VERY careful with this measurement! Stand up straight, measure from under the crutch where the seams of your trousers meet, up the front to the collar of a close fitting T-shirt.

INSEAM \_\_\_\_\_

From the crutch to the ankle bone.

SHOE SIZE \_\_\_\_\_