



The Airfield, Headcorn, Kent, TN27 9HX, UK
 Tel 01622 890967 - Fax 01622 891236
 Email symbiosis.suits@btinternet.com
 www.symbiosissuits.co.uk

ORDER FORM - SLOWPO

Name _____
 Sex _____
 Address _____

 Country _____
 Tel/Fax _____
 Email _____

Office Use Only	
Date Received	_____
Amount Paid	_____
Notes	_____

Nylon Taffeta fronted, slow jump suit with Zero-P lining in arms, legs and other areas for added lift.
 For more information see Symbi brochure pages 1 - 4

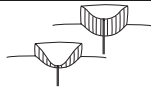
Slow fall suit for the heavier jumper with zero-P lining in arms, legs and other areas for added lift.

SLOWPO SUIT

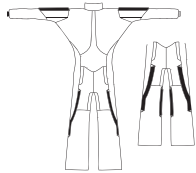
£207

Nylon Taffeta front (panels 8 & 9)

Poly Cotton front (panels 8 & 9)



Collar _____
 High _____
 Low _____



Grips _____
 Thin - 25mm _____
 Thick - 38mm _____
 Inside Knees _____

Single Col piping along length of grips _____

Jack Knife Pocket _____

Paddeed Knees _____

Padded Elbows _____

Standard Booties _____

Mega Booties _____

Vented Mega Booties _____

Rush Order _____

UK _____

Post & Packing _____
 Europe _____

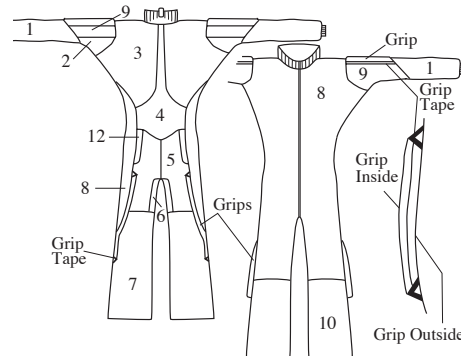
Outside Europe _____

Payment for the full amount must accompany each order **TOTAL ENCLOSED**

COLOURS

CHOOSE YOUR COLOURS WITH A CROSS IN THE BOXES ON THE RIGHT.

If your design is not symmetrical write your colour choice on the drawings. Some colours are not a perfect match in the different fabrics. If in doubt, see fabric sample book.



PANELS	1	2	3	4	5	6	7	8	9	10	11	12	Grips Outside	Grips Inside	Grip Tape
COLOURS															
Black															
Dark Grey															
Light Grey															
Silver Grey															
White															
Navy Blue															
Royal Blue															
Light Blue															
Blue Turquoise															
Petrol Green															
Jade Green															
Emerald Green															
Mid Green															
Dark Green															
Olive Green															
Lime Green															
Neon Yellow															
Golden Yellow															
Orange															
Red															
Bergundy															
Raspberry															
Neon Pink															
Rose Pink															
Light Pink															
Purple															
Dark Purple															
Lilac															

Knee/Elbow Pad Colours

Padded Knees _____
 Padded Elbows _____

MEASUREMENTS

Please take your measurements carefully. We are unable to make your suit fit without your correct measurements. Study the diagram to assist you. Get someone to help you and double check each measurement. Measure yourself over a T-shirt and thin trousers.

Do not add anything to your measurements.

If we receive incorrect measurements, we will have to charge for modifications.

HEIGHT _____

WEIGHT _____

SHOULDERS _____

CHEST _____

Across the back from one shoulder seam to the other. Straight tape

Widest part - Around nipple

ARM _____

Girls - CUP SIZE _____

From the shoulder seam of a shirt to the bone of the wrist.

WAIST _____

Narrowest Part

FOREARM _____

HIP _____

Widest part of the muscle.

Widest part around the buttocks

BICEP _____

THIGH _____

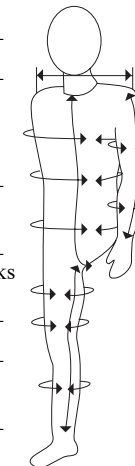
Widest part of muscle with the bicep relaxed.

LOWER THIGH _____

125mm above knee

CALF _____

Widest part of muscle



BODY _____

Be VERY careful with this measurement! Stand up straight, measure from under the crutch where the seams of your trousers meet, up the front to the collar of a close fitting T-shirt.

INSEAM _____

From the crutch to the ankle bone.

SHOE SIZE _____

(for booties only)